



17 Arthur Close , Farnham, GU9 8PE

A well presented 3 bedroom mid terrace house with a southerly facing rear garden located on a south Farnham cul de sac. The house is situated within walking distance of Farnham town, mainline train station, good schools and shops.

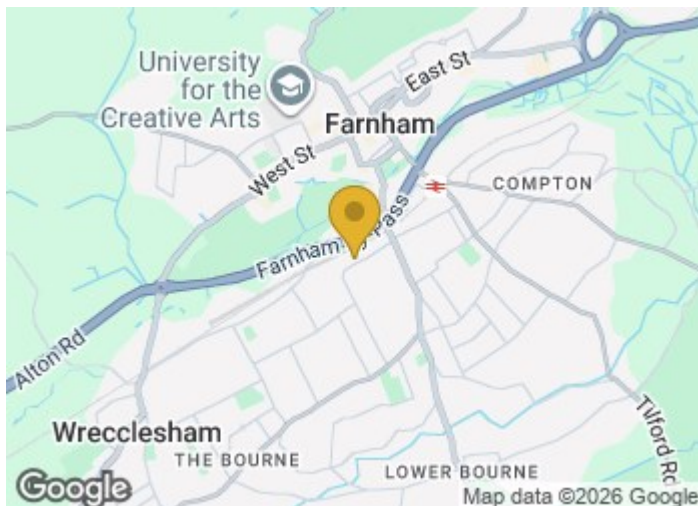
Price Guide £375,000

17 Arthur Close

, Farnham, GU9 8PE



- Entrance porch
- Kitchen
- Southerly facing rear garden with storage shed and lawned front garden
- Close to local schools and shops
- Entrance hall
- 3 bedrooms
- Garage in nearby block
- Sitting / dining room with double doors to rear garden
- Bathroom
- Walking distance to Farnham town and mainline railway station

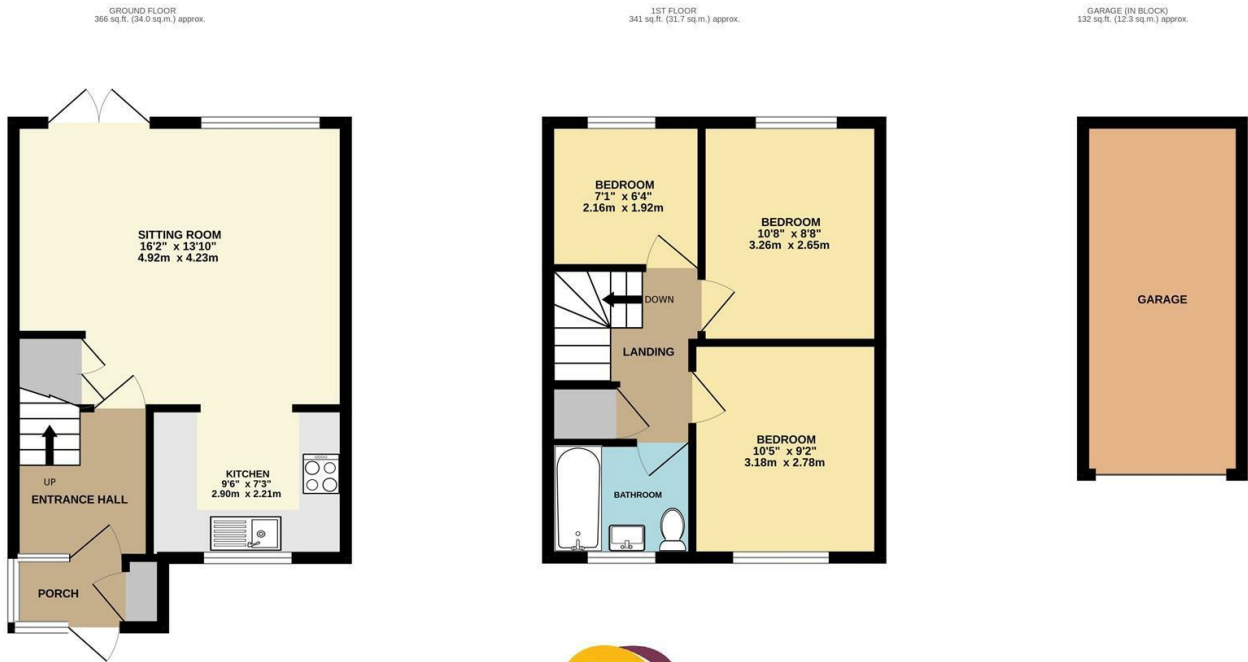


[Directions](#)
SAT NAV GU9 8PE





Floor Plan



TOTAL FLOOR AREA : 839 sq.ft. (77.9 sq.m.) approx.

Whilst every attempt has been made to ensure the accuracy of the floorplan contained here, measurements of doors, windows, rooms and any other items are approximate and no responsibility is taken for any error, omission or mis-statement. This plan is for illustrative purposes only and should be used as such by any prospective purchaser. The services, systems and appliances shown have not been tested and no guarantee as to their operability or efficiency can be given.
Made with Metropix ©2025



These particulars, whilst believed to be accurate are set out as a general outline only for guidance and do not constitute any part of an offer or contract. Intending purchasers should not rely on them as statements of representation of fact, but must satisfy themselves by inspection or otherwise as to their accuracy. No person in this firm's employment has the authority to make or give any representation or warranty in respect of the property.

